

**Jillian Close  
Hampton  
TW12 2NX**

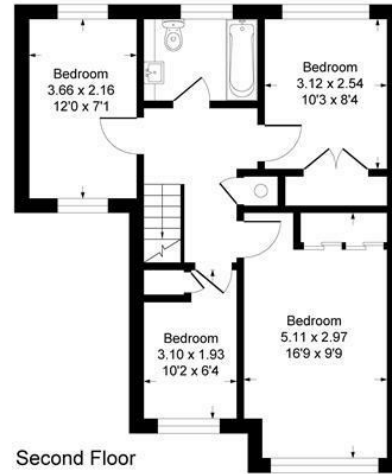
**£799,950**

**ChaseBuchanan**

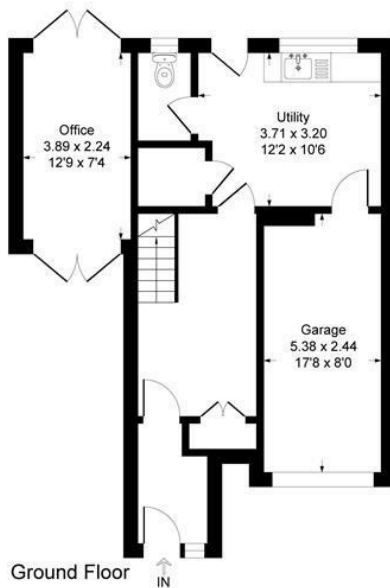


## Jillian Close TW12

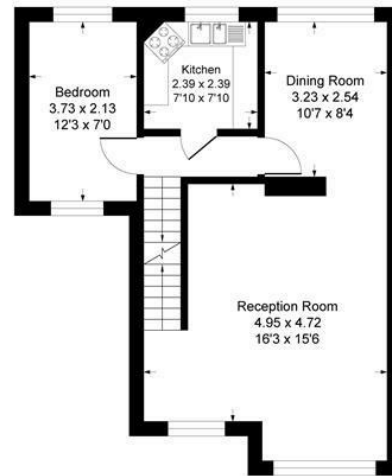
Approximate Gross Internal Floor Area = 161.2 sq m / 1736 sq ft



Second Floor



Ground Floor



First Floor

Illustration for identification purposes only, measurements are approximate, not to scale.

- Viewings accompanied by Chase Buchanan
- End of terrace
- Chain free
- New boiler
- Five bedrooms
- Potential to extend
- Secluded walled garden
- Council Tax band F

This end of terrace townhouse is located in a highly desirable area of Hampton, providing five bedrooms with the potential to extend further (STPP).

With over 1,700 sq ft of versatile space over three levels, the ground floor has an integral garage, utility room, office/garden room, W.C and ample storage. In addition there is a large lean-to storage unit not on the floor plan. To the first floor is the kitchen, dining room, living room and fifth bedroom. The whole area is light, bright and airy.

The top floor comprises four bedrooms, two of which are good size doubles with built in storage, one smaller double and a single. The family bathroom consists of bath/shower, heated towel rail, basin and W.C.

The secluded, walled garden has a patio area and lawn with mature shrubs and an outside tap.

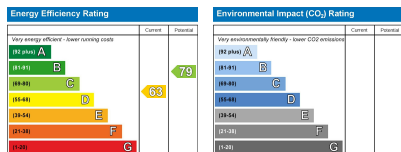
Jillian Close is a quiet cul de sac in the heart of the village, just off Chestnut Avenue. Some excellent schools are nearby and the local Waitrose is a short walk. It is ideal for families and is within walking distance of Carlisle Park, Royal Bushy Park and Hampton open air swimming pool. There is a variety of local boutique shops, independent cafes and restaurants close to hand.

For more information or to book a viewing, please contact:

020 8941 7576

**ChaseBuchanan**

101 High Street, Hampton Hill, TW12 1NJ



Care has been taken in the preparation of these particulars, however, their accuracy is not guaranteed and they do not form part of any contract. Measurements stated must be considered maximum.